



413 230V

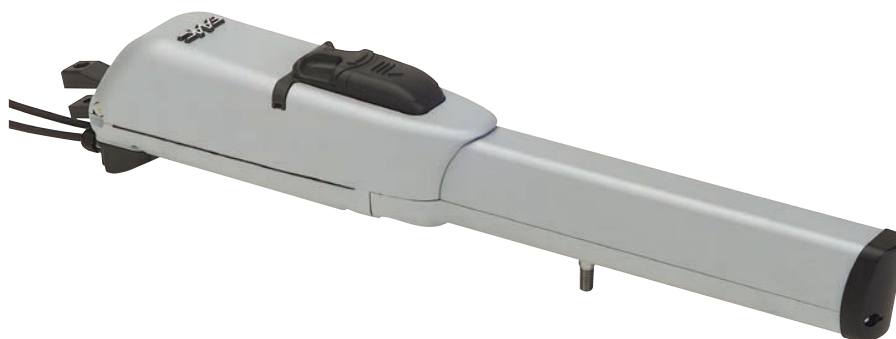
230V Electromechanical operator

Max width single leaf

1,8 - 2,5 m (with
electric lock)

Use frequency

30%



- “Off axis” thrust operator.
- Opening and closing mechanical stops included.
- Horizontal exit for cables to allow near to ground installation (low installation).



**230V SAFEzone
system:**
413 230V + E045 or
E145 + SAFEcoder



**GREENTech 230V
system:**
413 230V + E045
or E145



DIMENSIONS AND TECHNICAL SPECIFICATIONS

Model	413 230V
Power supply voltage	220-240V~ 50/60 Hz
Motor	Asynchronous single phase
Max. power	250 W
Max expressed force	2000 N (*)
Rod max speed	16 mm/s (*)
Rod travel	300 mm (350 mm without mechanical stops)
Max. leaf opening angle	110°
Operating ambient temperature	-20°C ÷ + 55°C
Thermal protection	140°C
Protection class	IP54
Weight	7.8 Kg
Use frequency	S3 - 30%
Max. leaf width	1,8 m (2,5 with electric lock)
Mounting brackets	Rear attachment to be welded/screwed - front attachment to be welded
Dimensions (LxDxH)	777 x 101 x 152 mm
Electronic equipment	Not included

(*) data referred to 230V~ 50Hz

FAMILY MODELS

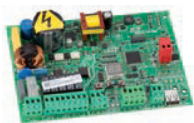
Model	Item code
413 - 230V	104413

PACKS

413 230V includes: an electromechanical operator, installation accessories, a release key, a 400V 6.3μF thrust capacitor.
The LS version includes the electric limit switches.

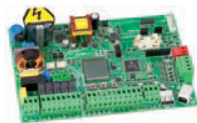
Typical Installation Examples page. 320

ELECTRONIC CONTROL UNITS



E045 electronic control unit
Info at page 142

790005



E145 electronic control unit
Info at page 144

790006

ACCESSORIES



Enclosure mod. L for electronic control units

720118



Enclosure mod. E for electronic control units

720119



Enclosure mod. LM for electronic control units

720309

>>



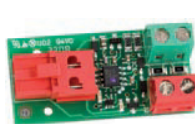
Plate to be walled

737604



SAFEcoder BUS magnetic absolute encoder (FAAC Patent)

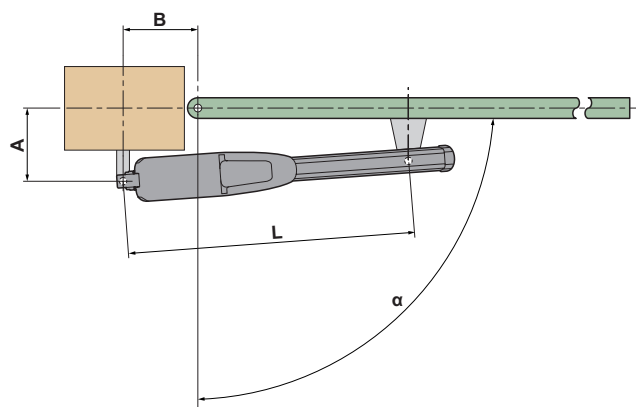
404040



BUS XIB interface (for E045 or E024S control unit with non BUS photocell)

790062

INSTALLATION DIMENSIONS (MM)



	α	A	B	L
413 with opening and closing stops	90°	140	140	675
	110°	120	135	
413 with opening stop	90°	150	150	690
	110°	135	135	
413 without opening and closing stops	90°	160	160	690
	110°	145	145	

For any other configuration please refer to the technical manual

OTHER ACCESSORIES

Key operated buttons
page 174

Safety devices
page 186

Transmitters and receivers
page 166

Photocells and columns
page 183

Flashing lights
page 194

Various accessories
page 195