

J275 HA V2

Retractable traffic bollard



Type of operator

Hydraulic Automatic

Height

600 or 800 mm



- Guaranteed for a high use frequency
- Easy maintenance (can be performed by a single person)
- "Gentle stop" function to assure a gentle stop on the low limit switch



DIMENSIONS AND TECHNICAL SPECIFICATIONS

Model	J275 HA V2 H600	J275 HA V2 H600 INOX	J275 HA V2 H800	J275 HA V2 H800 INOX
Type of operator	Hydraulic operator			
Cylinder height from ground	600 mm		800 mm	
Cylinder diameter	275 mm			
Cylinder material	S235JR EN 10219 steel	AISI 316L satin finish	S235JR EN 10219 steel	AISI 316L satin finish
Cylinder treatment	Cataphoresis and polyester powder paint, dark grey metallised RAL 7021	Satin finish	Cataphoresis and polyester powder paint, dark grey metallised RAL 7021	Satin finish
Rising time	~5 s (*)		~7 s (*)	
Descent time	~3,5 s (*)		~4,5 s (*)	
Emergency descent device	YES (excludable)			
Emergency descent time	~1,2 s (*)		~1,5 s (*)	
Rising obstacle detection device	YES			
Release device	YES			
Slow lowering	Yes			
Power supply voltage	220-240V ~ 50/60Hz			
Max. power	575 W (*)			
Hydraulic pump unit protection class	IP67			
Type of use	Intensive use (Traffic)			
Impact resistance	38000 J	67000 J	38000 J	67000 J
Break in resistance	128000 J	207000 J	128000 J	207000 J
Pit weight	55 Kg		65 Kg	
Traffic bollard weight	112 Kg		130 Kg	
Operating ambient temperature	-15°C / +55°C			
Operating ambient temperature with heater	-25°C / +55°C			
Walled in pit with cylinder profile (LxWxH)	560 x 560 x 950 mm		560 x 560 x 1.220 mm	
Excavation dimensions (LxWxH)	1.000 x 1.000 x 1.250 mm		1.000 x 1.000 x 1.540 mm	

(*) data referred to 230V~ 50Hz

PAINTED STEEL FAMILY MODELS

Model	Item code
J275 HA V2 H600	116006
J275 HA V2 H800	116007

PACKS

J275 HA V2 is equipped with:

- steel cylinder with cathaphoresis treatment and metallised dark grey powder coated painting
- flashing LED lights ring
- movement signal (acoustic buzzer)
- emergency lowering in case of a power cut (can be excluded)
- hydraulic lock in raised position (in case of a power cut)
- release key for manual emergency lowering

INOX AISI 316L FAMILY MODELS

Model	Item code
J275 HA V2 H600	116036
J275 HA V2 H800	116037

PACKS

J275 HA V2 INOX is equipped with:

- AISI 316L satin-finished stainless steel cylinder
- flashing LED lights ring
- movement signal (acoustic buzzer)
- emergency lowering in case of a power cut (can be excluded)
- hydraulic lock in raised position (in case of a power cut)
- release key for manual emergency lowering

ELECTRONIC CONTROL UNITS



JE275 Control unit ♦

116300

INSTALLATION ACCESSORIES



Pit JP275/600 for bollard H600 complete with counter frame

1161001



JP 275/800 pit extension for bollard H800 ♦

1161011

OPTIONAL ACCESSORIES



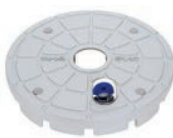
Pit heater JH275 (to extend operation down to -25°C)

116200



Pit cover JC275

116201



J275 anti-burglar head

116104

NOTE

- ♦ Management up to max 3 bollards J275 HA
- ♦ Both elements are required for the 800 mm version 116100 + 116101